

Creating Value Through Sustainability

OUR APPROACH

Mitsubishi Development understands investing in the modern resources industry comes with an inherent and long-term commitment to global sustainability. We are privileged to be part of Australian communities and we acknowledge the high standards our stakeholders expect of us. By identifying and seeking to address key environmental, social and governance issues, and transforming society's needs into business opportunities, we believe we can create economic, societal and environmental value.

OUR CORPORATE PRINCIPLES

Mitsubishi Development's Three Corporate Principles guide how we conduct business and are at the heart of our sustainability approach.

Corporate Responsibility to Society "Shoki Hoko"

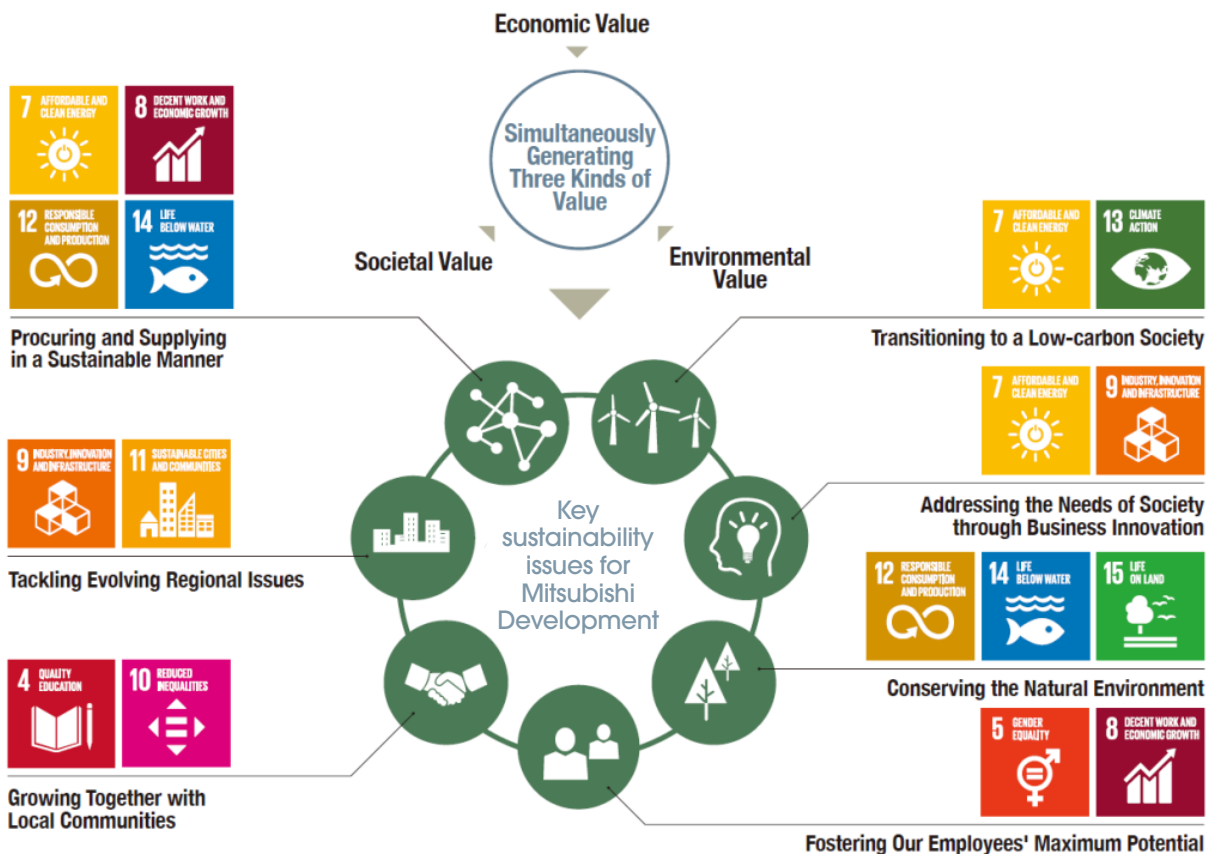
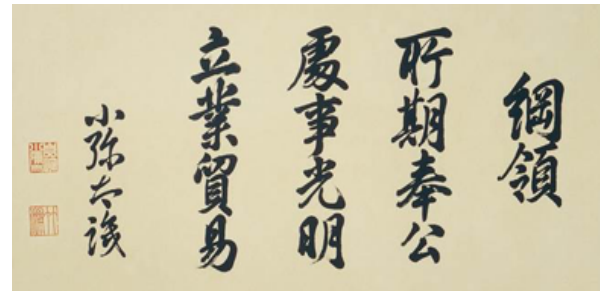
Strive to enrich society, both materially and spiritually, while contributing towards the preservation of the global environment.

Integrity and Fairness "Shoji Komei"

Maintain principles of transparency and openness, conducting business with integrity and fairness.

Global Understanding Through Business "Ritsugyo Boeki"

Expand business, based on an all-encompassing global perspective.



SUSTAINABILITY CASE STUDIES

Tackling Evolving Regional Issues



Mitsubishi Development has funded world-leading research to build a new mental health program for Bowen Basin communities.

Our \$500,000 program will access more than one million data points, including interviews with community members to identify how mental health services can be improved for individuals in the Bowen Basin following the impact of COVID-19.

Transitioning to a Low Carbon Society



Our \$600K research program through Earthwatch will help national management of Queensland's vital mangrove habitats. The research will inform greater conservation and understanding of blue carbon ecosystems, which could help Australia move to a low carbon future.

Our communities in the North have a strong connection with their coastal environments, so our program will seek to engage teachers, Indigenous Land and Sea Rangers, as well as citizen scientists to assist in collecting data.

Growing Together with Local Communities



Since 2009, Mitsubishi Development has contributed \$1.25M to the University of New South Wales' School of Minerals and Energy Resources Engineering.

Through the provision of facilities, scholarships and student programs, we are proud to support budding mining engineers to develop their understanding of sustainable mining practices.

Our partnership with UNSW is now focused on embedding leading edge digital mining capabilities into the curriculum to ensure graduates are ready for the mining jobs of the future.

Procuring and Supplying in a Sustainable Manner



Mitsubishi Development's corporate philosophy is rooted in the principles of integrity and fairness. We value openness and conduct our business activities in compliance with all relevant laws, international regulations and internal rules.

We understand that ensuring our supply chains operate sustainably is crucial to our business. To help ensure this, we outline our requirements through our Policy for Sustainable Supply Chain Management which includes our position towards human and labour rights, anti-corruption and environmental conservation.

Mitsubishi Development believes that respect for human rights is an important component of promoting sustainability in its global business.

Tackling Evolving Regional Issues



Mitsubishi Development is proud to support our communities to rebuild and recover following natural disasters, such as bushfires and floods.

In 2020, together with our parent company Mitsubishi Corporation, we donated \$1M towards bushfire relief efforts across Queensland and New South Wales.

In early 2019, we donated \$100,000 to the North Queensland Flood appeal to purchase essential items for families whose homes were either damaged or destroyed by the floods.

Transitioning to a Low Carbon Society



Transitioning to a low carbon society is one of the most important focus areas within MDP's Key Sustainability Issues and we are therefore working to embed this into our business strategy.

In June 2019, Mitsubishi Development and BHP signed a memorandum of understanding (MoU) agreement to work together in the pursuit of emissions reduction, including from the life-cycle use of marketed products.

As part of this MoU, BHP and Mitsubishi Development are reviewing opportunities to undertake research, pilot new ideas, and develop and deploy new emissions reduction technologies.

Mitsubishi Development is confident that this partnership with BHP will help us to achieve our goal of transitioning to a low-carbon future and contribute to the sustainable future of our local and global communities.

GET IN CONTACT

HEAD OFFICE - BRISBANE
Level 16 / 480 Queen Street, Brisbane QLD, 4000
+61 (07) 3227 1000

www.mdp.com.au

SYDNEY
Suite 3503, Level 35, 225 George Street, Sydney NSW, 2000
+61 (02) 8241 2710

Mitsubishi Development: Creating Value Through Sustainability